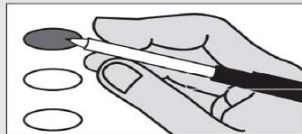


**SAMPLE Ballot - Jefferson County, WA**  
**Primary Election Tuesday, August 3, 2021**

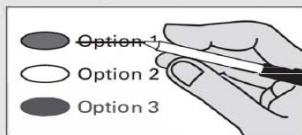
**i Instructions**

**Marking Your Ballot**



Fill in the oval to the left of your choice with a dark pen. Vote for one. If you vote for more than one, that race or measure will not be counted. To vote for a candidate not on the ballot, print the name on the line and fill in the oval to the left.

**Making A Correction**



If you make a mistake, draw a line through the entire candidate's name or response. To vote for another candidate or response, fill in the oval to the left of your new selection.

**Additional Information**

Sign and date the voter's declaration on the return envelope.  
For a replacement ballot, contact the Jefferson County Auditor's Office at (360) 385-9119. Deposit your ballot in a ballot drop box no later than 8:00 p.m. Election Day or mail. It must be postmarked on or before Election Day.  
For a list of the people and organizations that donated to state and local candidates and ballot measure campaigns, visit [www.pdc.wa.gov](http://www.pdc.wa.gov).

**Local - Nonpartisan Office(s)**

**Sequim School District No. 323**  
Director At Large, Position No. 4

- Derek Huntington
- Virginia R. Sheppard
- Rachel Tax
- Kristi Schmeck
- Write-in \_\_\_\_\_

**Clallam-Jefferson Fire Protection District No. 3**  
Commissioner Position No. 1

- Jeff Nicholas
- Sean Ryan
- Duane Chamlee
- Write-in \_\_\_\_\_

**Port Ludlow Fire Protection District No. 3**  
Commissioner Position No. 3

- Glenn T. Clemens
- Mike Feely
- Ron Helmonds
- Write-in \_\_\_\_\_

**This is an "EXAMPLE" of your ballot.**  
**The ballot you receive will have the**  
**issue(s) based on your residence**  
**address.**

**City of Port Townsend - Nonpartisan Office**

**City of Port Townsend**  
Council Member Position No. 5

- Sky Hardesty-Thompson
- Tyler Myles Vega
- Libby Urner Wennstrom
- Write-in \_\_\_\_\_

**Local Measure**

**PROPOSITION NO.1**

Jefferson County Fire Protection District No. 2 - Board of Commissioners

Emergency Medical Services Property Tax Levy.

Will Jefferson County Fire Protection District No. 2 be authorized to continue funding emergency medical services for its citizens by continuing a regular property tax levy of \$.50 or less per \$1,000.00 of assessed valuation for a period of an additional six consecutive years to be collected beginning in 2023?

- Yes
- No

Sample Ballot

**This is an "EXAMPLE" of your ballot.  
The ballot you receive will have the  
issue(s) based on your residence  
address.**

**END OF BALLOT**